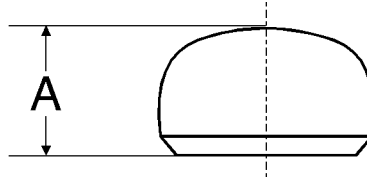
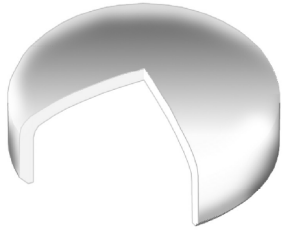


# End Caps - ANSI B16.9



Dimensions (based on ASME/ANSI B16.9) and example weights

Nominal Pipe Size	Common		Limiting Wall Thickness		Length				Weight
	OD at Bevel		T		Dimension A				40S/STD <sup>1</sup>
	in	mm	in	mm	For wall ≤ T		For wall > T		kg/piece
1/2	0.84	21	0.18	3.73	1.00	25	1.00	25	0.04
3/4	1.05	27	0.15	3.91	1.00	25	1.00	25	0.05
1	1.32	33	0.18	4.55	1.50	38	1.50	38	0.11
1 1/4	1.66	42	0.19	4.85	1.50	38	1.50	38	0.14
1 1/2	1.90	48	0.20	5.08	1.50	38	1.50	38	0.17
2	2.38	60	0.22	5.54	1.50	38	1.75	44	0.23
2 1/2	2.88	73	0.28	7.01	1.50	38	2.00	51	0.39
3	3.50	89	0.30	7.62	2.00	51	2.50	64	0.66
3 1/2	4.00	102	0.32	8.08	2.50	64	3.00	76	-
4	4.50	114	0.34	8.56	2.50	64	3.00	76	1.17
5	5.56	141	0.38	9.53	3.00	76	3.50	89	1.91
6	6.62	168	0.43	10.97	3.50	89	4.00	102	2.90
8	8.62	219	0.50	12.70	4.00	102	5.00	127	5.19
10	10.75	273	0.50	12.70	5.00	127	6.00	152	9.15
12	12.75	324	0.50	12.70	6.00	152	7.00	178	13.3
14	14.00	356	0.50	12.70	6.50	165	7.50	191	15.9
16	16.00	406	0.50	12.70	7.00	178	8.00	203	20.0
18	18.00	457	0.50	12.70	8.00	203	9.00	229	25.6
20	20.00	508	0.50	12.70	9.00	229	10.00	254	31.9
22	22.00	559	0.50	12.70	10.00	254	10.00	254	38.8
24	24.00	610	0.50	12.70	10.50	267	12.00	305	45.1
26	26.00	660	-	-	10.50	267	Subject to agreement with purchaser	-	53.8
28	28.00	711	-	-	10.50	267		-	62.4
30	30.00	762	-	-	10.50	267		-	71.7
32	32.00	813	-	-	10.50	267		-	81.6
34	34.00	864	-	-	10.50	267		-	-
36	36.00	914	-	-	10.50	267		-	103
38	38.00	965	-	-	12.00	305		-	-
40	40.00	1016	-	-	12.00	305		-	127
42	42.00	1067	-	-	12.00	305		-	140
44	44.00	1118	-	-	13.50	343		-	-
46	46.00	1168	-	-	13.50	343		-	-
48	48.00	1219	-	-	13.50	343		-	-

Notes

- Dimensions quoted in mm (except T) are 'Nominal' values from B16.9 (rounded equivalents of the inch dimensions). Refer to B16.9 for additional 'Max' and 'Min' metric dimensions.
- The shape of caps shall be ellipsoidal and conform to shape requirements in the ASME Boiler and Pressure Code.
- For tolerances see page 6-2.
- 1 Weights are approximate and based on manufacturers' data (where available) for Schedule 40S/Standard fittings. See page 6-6 for further information.